



TAUTLINER®



Built for payload flexibility and value

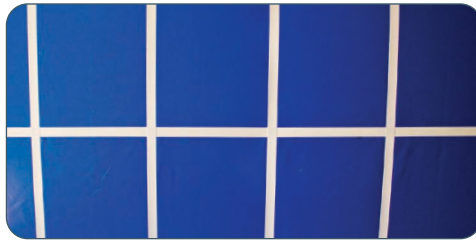
Light weight and strong, the Tautliner® is built to load like a flatbed, and protect like a van. It incorporates our innovative flatbed technology, giving it one of the highest strength-to-weight ratios in the industry. You can customize it to meet your unique application.

■ High-strength, light weight superstructure



The .040 inch aluminum roof skin is supported by bonded roof bows and aluminum top rails, creating a light weight and heavy-duty superstructure that delivers a high strength-to-weight ratio. The front wall and rear door frame are manufactured from Corten steel for superior protection against corrosion.

■ Kin-Sider™ by Kinedyne® curtain



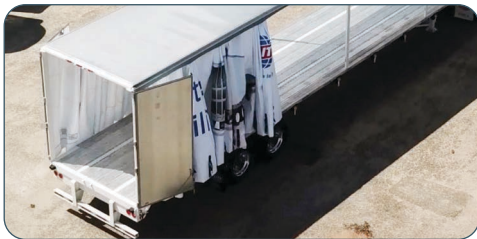
The light weight Kin-Sider curtain features an industry-leading welded design. It is made from a durable 2x2 Panama weave with a flame-retardant PVC-laminated polyester substrate material. The PVC-saturated polyester reinforcement straps are sonically welded.

■ Load versatility



The Tautliner is engineered to allow for a vast variety of back hauls, regardless of dimension or size. Its load versatility enables you to use the full length and width of the trailer's deck for increased backhaul capability.

■ Greater accessibility



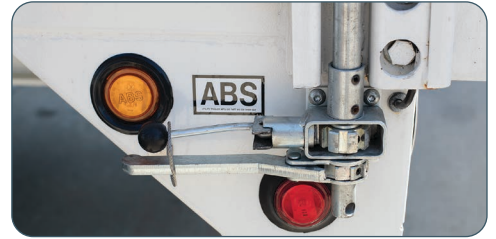
The Tautliner offers three-way simultaneous access through the rear doors and from both sides, making it easier to load and unload for faster deliveries—without first-on, last-off load planning challenges.

■ Buckle and hook assembly



The Kin-Sider curtain also includes a buckle and hook assembly with a pull-to-release action that makes it easier to operate, especially in cold weather.

■ Tensioning system



The Tautliner tensioning system with the Kin-Sider curtain provides a secure, weather-tight fit for added protection.

■ High-strength, light weight Utility trailer platform



The Tautliner platform delivers one of the highest strength-to-weight ratios in the industry. It begins with the Utility trailer aluminum and steel flatbed and ends with a repurposed design that provides more strength, with a lower tare weight. The Tautliner's aluminum side rails feature integral sliding winch tracks for increased load securement versatility.

■ High quality digital graphics



Eye catching digital graphics can be applied and is available as an option. Full digital graphics come with an exclusive Anti-Graffiti coating that resists UV rays and fungal growth. An array of curtain colors are also offered.